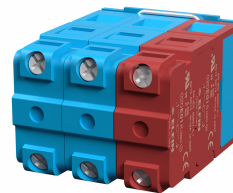
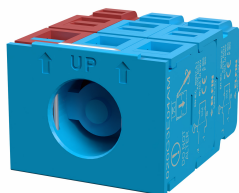


## Datenblatt

020G3E04AM

Kontaktelement 2 N.C. mit Selbstüberwachung



## Merkmale

<b>Baureihe</b>	Kontaktelemente
<b>Komponenten</b>	Kontaktelement 1 N.C. mit Selbstüberwachung
<b>Artikel-Nr.</b>	020G3E04AM
<b>Beschreibung</b>	Kontaktelement 2 N.C. mit Selbstüberwachung
<b>Farbe</b>	Blu
<b>Gewicht - gr</b>	30,0
<b>Zolltarifnummer</b>	85365080
<b>GTIN</b>	8052878076009

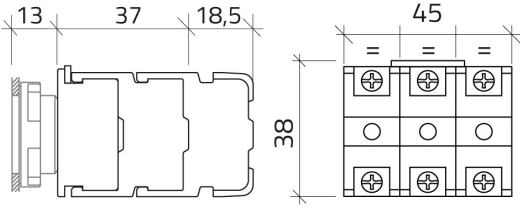
## Technische Daten

<b>Approvals</b>	CE
<b>Compliance with standards</b>	IEC-ENC60947-1, IEC-EN60947-5-1
<b>Operating temperatures</b>	-40° ÷ +70°C
<b>Protection degree</b>	IP20 (IEC-EN60529)
<b>Mechanical durability</b>	5.000.000 Operations
<b>Shock resistance</b>	30g duration=18ms (EN-IEC 60068-2-27)
<b>Shock resistance</b>	50g duration=11ms (EN-IEC 60068-2-27)
<b>Vibration resistance</b>	5g f= 2...500Hz (EN-IEC 60068-2-6)
<b>Pollution degree for installation</b>	3
<b>Housing material</b>	PA Polyamide
<b>Combustion behaviour</b>	V0 (UL94)
<b>Terminal screw</b>	Tightening torque 0.8÷1 Nm (IEC-EN60947-1)
<b>Terminal screw head shape</b>	Combined:cross Phillips2 or slotted flat D.5mm max
<b>Terminal screw material</b>	Zinc plated steel
<b>Terminal screw connections</b>	min 1x0.5mm <sup>2</sup> (20AWG) - max 2x2.5mm <sup>2</sup> (14AWG)
<b>Cable lugs</b>	Fork type "spring spade" for screw M3.5 / W=6.4mm
<b>Contact material</b>	Ag 1000/1000
<b>Contact movement</b>	Slow action contact
<b>Contacts</b>	Self cleaning by pads creeping
<b>NC contact operating travel</b>	1.0mm NC change the state - 5mm total
<b>NC contacts (all versions)</b>	Positive opening function (IEC-EN60947-5-1 ann.K)

<b>NC contacts</b>	Minimum positive opening travel: 1mm
<b>NC contacts (all versions)</b>	Minimum force for positive opening: 1.5N
<b>NC contacts (all versions)</b>	Total travel including overtravel: 5mm
<b>Operating force (all version)</b>	2N
<b>Rated insulation voltage</b>	Ui 690V - Uimp 4KV (IEC-EN60947-1)
<b>Rated thermal current</b>	Ith 10A (IEC-EN60947-1)
<b>Rated conditional short-circuit current</b>	1000A (IEC-EN60947-1)
<b>Short-circuit protective device</b>	10A cartridge fuse gG 10x38mm (IEC-EN60947-5-1)
<b>Electrical reliability</b>	<10exp(-8)5mA in clean environment IEC-EN60947-5-4
<b>AC Performances</b>	AC 24V-10A, 120V-6A, 240V-3A, 600V-1.2A
<b>DC Performances</b>	DC 24V-5A, 120V-1.1A, 240V-0.55A
<b>Self-monitoring contact block</b>	It checks the properly installation with operator
<b>Self-monitoring contact block</b>	Suitable for NOT illuminated operators only
<b>Warranty period</b>	18 months

# Technische Zeichnungen

020



032

