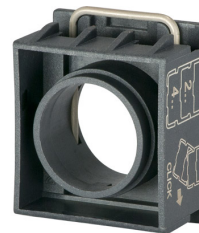


## Fiche technique

020G

Embase de fixation pour élément de contact



## Caractéristiques

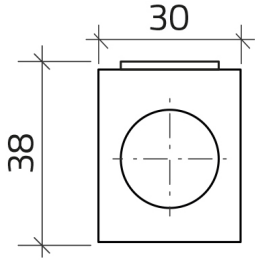
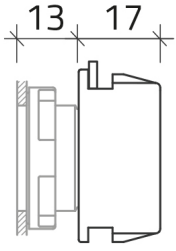
<b>Portée</b>	Blocs de contacts
<b>Composant</b>	Embase de fixation
<b>Code</b>	020G
<b>Désignation des marchandises</b>	Embase de fixation pour élément de contact
<b>Couleur</b>	Grigio RAL7016
<b>Poids</b>	8,42
<b>Tarif douanier</b>	85365080
<b>GTIN</b>	8052878003999

## Données techniques

<b>Approvals</b>	CE, UL, CSA
<b>Compliance with standards</b>	IEC-EN60947-1, IEC-EN60947-5-1, UL508, CSA C22-2
<b>Compliance with standards</b>	UNI CEI EN 45545-2, CEI EN 61373
<b>Operating temperatures</b>	-40° ÷ +70°C
<b>Environmental operating values</b>	+25°C-97%RH / +45°C-93%RH (IEC-EN60068-2-30)
<b>Material</b>	PA Polyamide
<b>Flange clamping spring material</b>	Stainless steel AISI 304

## Dessins techniques

020



032

