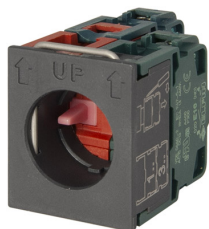


## Scheda Dati

020GE21

Elemento de contacto 2 N.O.+1 N.C. con brida



## Caratteristiche

Rango	Elementos de contacto
Componente	Elementos de contacto, 2 N.O.+1 N.C. con brida
Código	020GE21
Descripción	Elemento de contacto 2 N.O.+1 N.C. con brida
Color	Rosso-Verde
Peso	42,0
Tariffa doganale	85365080
GTIN	8052878067366

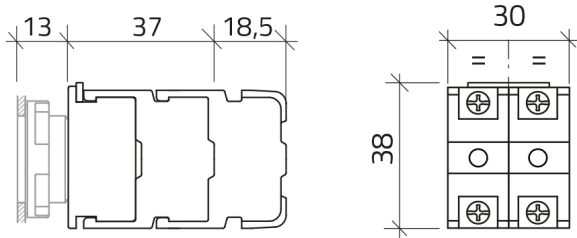
## Dati tecnici

Approvals	CE, UL, CSA
Compliance with standards	IEC-EN60947-1, IEC-EN60947-5-1, UL508, CSA C22-2
Compliance with standards	UNI CEI EN 45545-2, CEI EN 61373
Operating temperatures	-40° ÷ +70°C
Environmental operating values	+25°C-97%RH / +45°C-93%RH (IEC-EN60068-2-30)
Protection degree	IP20 (IEC-EN60529)
Mechanical durability	5.000.000 Operations
Shock resistance	30g duration=18ms (EN-IEC 60068-2-27)
Shock resistance	50g duration=11ms (EN-IEC 60068-2-27)
Vibration resistance	5g f= 2...500Hz (EN-IEC 60068-2-6)
Pollution degree for installation	3
Housing material	PA Polyamide
Flange clamping spring material	Stainless steel AISI 304
Terminal screw	Tightening torque 0.8÷1 Nm (IEC-EN60947-1)
Terminal screw head shape	Combined:cross Phillips2 or slotted flat D.5mm max
Terminal screw material	Zinc plated steel
Terminal screw connections	min 1x0.5mm <sup>2</sup> (20AWG) - max 2x2.5mm <sup>2</sup> (14AWG)
Cable lugs	Fork type "spring spade" for screw M3.5 / W=6.4mm
Contact material	Ag 1000/1000
Contact movement	Slow action contact
Contacts	Self cleaning by pads creeping

<b>NC contact operating travel</b>	1.0mm NC change the state - 5mm total
<b>NO contact operating travel</b>	3.6mm NO change the state - 5mm total
<b>NC contacts (all versions)</b>	Positive opening function (IEC-EN60947-5-1 ann.K)
<b>NC contacts</b>	Minimum positive opening travel: 1mm
<b>NC contacts (all versions)</b>	Minimum force for positive opening: 1.5N
<b>NC contacts (all versions)</b>	Total travel including overtravel: 5mm
<b>Operating force (all version)</b>	2N
<b>Rated insulation voltage</b>	Ui 690V - Uimp 4KV (IEC-EN60947-1)
<b>Rated thermal current</b>	Ith 10A (IEC-EN60947-1)
<b>Rated conditional short-circuit current</b>	1000A (IEC-EN60947-1)
<b>Short-circuit protective device</b>	10A cartridge fuse gG 10x38mm (IEC-EN60947-5-1)
<b>Electrical ratings</b>	AC15-DC13 (IEC-EN60947-5-1) - A600-P300 (UL 508)
<b>Electrical reliability</b>	<10exp(-8)5mA in clean environment IEC-EN60947-5-4
<b>AC Performances</b>	AC 24V-10A, 120V-6A, 240V-3A, 600V-1.2A
<b>DC Performances</b>	DC 24V-5A, 120V-1.1A, 240V-0.55A
<b>Warranty period</b>	18 months

# Disegni tecnici

## 020



## 032

