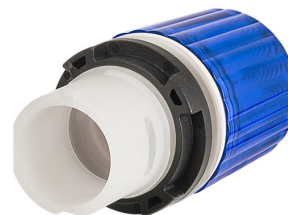


## Scheda Dati

020ULABL

Lampada spia modulare H 30, blu



## Caratteristiche

<b>Gamma</b>	Lampade spia Ø 22
<b>Componente</b>	Modulari H 30
<b>Codice</b>	020ULABL
<b>Descrizione</b>	Lampada spia modulare H 30, blu
<b>Colore</b>	Blu
<b>Peso</b>	13,0
<b>Tariffa doganale</b>	85365080
<b>GTIN</b>	8052878027285

## Dati tecnici

<b>Approvals</b>	CE, UL, CSA
<b>Compliance with standards</b>	IEC-EN60947-1, IEC-EN60947-5-1, UL508, CSA C22-2
<b>Compliance with standards</b>	UNI CEI EN 45545-2, CEI EN 61373
<b>Operating temperatures</b>	-40° ÷ +70°C
<b>Environmental operating values</b>	+25°C-97%RH / +45°C-93%RH (IEC-EN60068-2-30)
<b>Protection degree</b>	IP66 - IP69 (IEC-EN60529)
<b>Protection against impact</b>	IK03 (IEC-EN62262)
<b>Shock resistance</b>	30g duration=18ms (EN-IEC 60068-2-27)
<b>Shock resistance</b>	50g duration=11ms (EN-IEC 60068-2-27)
<b>Vibration resistance</b>	5g f= 2...500Hz (EN-IEC 60068-2-6)
<b>Material</b>	PA Polyamide
<b>Lens material</b>	PC Polycarbonate
<b>Locking ring material</b>	PA Polyamide
<b>Fixing diameter</b>	22.5mm - Thickness 1÷6mm
<b>Tightening torque</b>	1 ÷ 2,5Nm (8.8÷22.1 Lb-in)
<b>Modular pilot light</b>	Must be completed with bulb holder-power supply
<b>Protection against electric shock</b>	Class II (IEC-EN61140)
<b>Warranty period</b>	18 months

## Disegni tecnici

