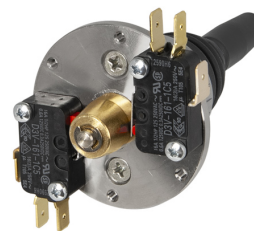


## Scheda Dati

030M2T22

Manipulador, 2 posiciones, 2 temporales, 2 N.O.+2 N.C.



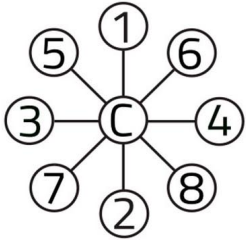
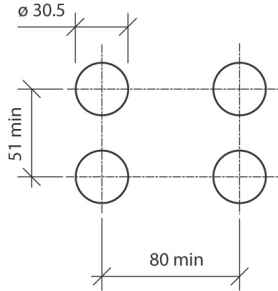
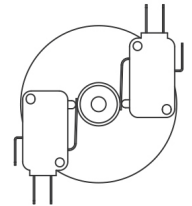
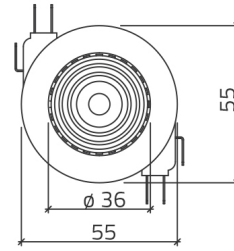
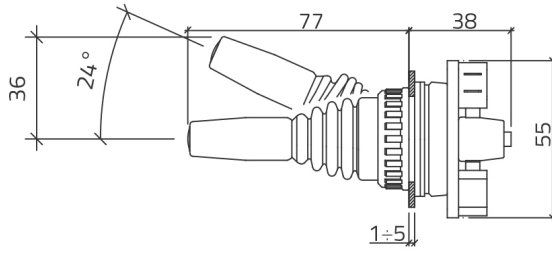
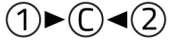
## Caratteristiche

<b>Rango</b>	Manipuladores Ø 30
<b>Componente</b>	Manipuladores de 2 posiciones temporales
<b>Código</b>	030M2T22
<b>Descripción</b>	Manipulador, 2 posiciones, 2 temporales, 2 N.O.+2 N.C.
<b>Color</b>	Nero
<b>Peso</b>	206,0
<b>Tariffa doganale</b>	85365080
<b>GTIN</b>	8052878029302

## Dati tecnici

<b>Approvals</b>	CE, (UL-CSA Microswitch only)
<b>Compliance with standards</b>	IEC-ENC60947-1, IEC-EN60947-5-1
<b>Operating temperatures</b>	-25° ÷ +65°C
<b>Protection degree</b>	IP65 (IEC-EN60529)
<b>Mechanical durability</b>	2.000.000 Operations
<b>Cap or bellow material</b>	Silicon rubber
<b>Housing material</b>	PA Polyamide
<b>External bezel material</b>	Chromed zinc alloy
<b>Internal parts material</b>	Lever, springs, bushing - stainless steel AISI 304
<b>Microswitches flange material</b>	Stainless steel AISI 304
<b>Fixing diameter</b>	30.5mm - Thickness 1÷6mm
<b>Tightening torque</b>	2 ÷ 3Nm (17.7 ÷ 26.6 Lb-in)
<b>Rated insulation voltage</b>	Ui 300V - Uimp 2.5KV (IEC-EN60947-1)
<b>Protection against electric shock</b>	Class II (IEC-EN61140)
<b>Microswitch contact form</b>	SPDT (single pole double throw)
<b>Microswitch terminals</b>	Quick connect #250 (6.35mm)
<b>Microswitch electrical ratings</b>	250VAC - 15A (resistive load)
<b>Microswitch electrical ratings</b>	250VDC - 0.3A / 125VDC - 0.6A (resistive load)
<b>Microswitch electrical durability</b>	100.000 operations
<b>Warranty period</b>	18 months

# Disegni tecnici



	8	6	4	2	0	1	3	5	7
MICROINTERRUTTORE MICROSWITCHES	1	2	3	4	5	6	7	8	9
2	10	11	12	13	14	15	16	17	18
3	19	20	21	22	23	24	25	26	27
4	28	29	30	31	32	33	34	35	36

