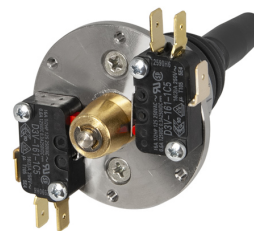


Scheda Dati

030M2T22

Manipulador, 2 posições, 2 Instantâneos, 2 N.O.+2 N.C.



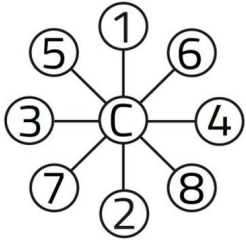
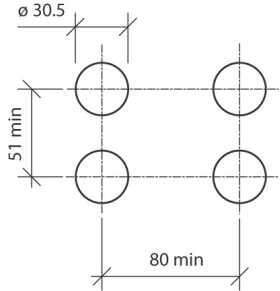
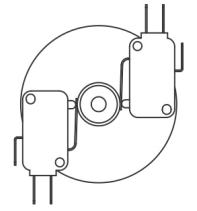
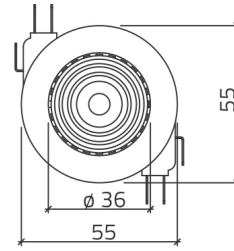
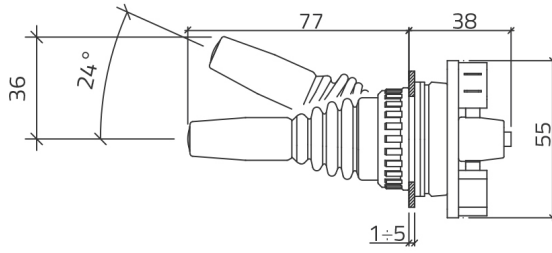
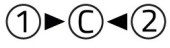
Caratteristiche

| | |
|-------------------------|--|
| Gama | Manipuladores Ø 30 |
| Componente | Manipuladores de 2 posições instantâneas |
| Código | 030M2T22 |
| Descrição | Manipulador, 2 posições, 2 Instantâneos, 2 N.O.+2 N.C. |
| Cor | Nero |
| Peso | 206,0 |
| Tariffa doganale | 85365080 |
| GTIN | 8052878029302 |

Dati tecnici

| | |
|--|--|
| Approvals | CE, (UL-CSA Microswitch only) |
| Compliance with standards | IEC-ENC60947-1, IEC-EN60947-5-1 |
| Operating temperatures | -25° ÷ +65°C |
| Protection degree | IP65 (IEC-EN60529) |
| Mechanical durability | 2.000.000 Operations |
| Cap or bellow material | Silicon rubber |
| Housing material | PA Polyamide |
| External bezel material | Chromed zinc alloy |
| Internal parts material | Lever, springs, bushing - stainless steel AISI 304 |
| Microswitches flange material | Stainless steel AISI 304 |
| Fixing diameter | 30.5mm - Thickness 1÷6mm |
| Tightening torque | 2 ÷ 3Nm (17.7 ÷ 26.6 Lb-in) |
| Rated insulation voltage | Ui 300V - Uimp 2.5KV (IEC-EN60947-1) |
| Protection against electric shock | Class II (IEC-EN61140) |
| Microswitch contact form | SPDT (single pole double throw) |
| Microswitch terminals | Quick connect #250 (6.35mm) |
| Microswitch electrical ratings | 250VAC - 15A (resistive load) |
| Microswitch electrical ratings | 250VDC - 0.3A / 125VDC - 0.6A (resistive load) |
| Microswitch electrical durability | 100.000 operations |
| Warranty period | 18 months |

Disegni tecnici



| | 8 | 6 | 4 | 2 | 0 | 1 | 3 | 5 | 7 |
|------------------------------------|---|---|---|---|---|---|---|---|---|
| MICROINTERRUTTORE MICROSWITCHES | 1 | | | | | | | | |
| 2 | | | | | | | | | |
| 3 | | | | | | | | | |
| 4 | | | | | | | | | |

