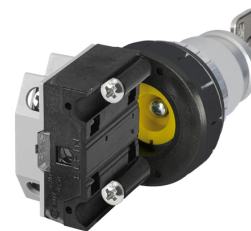


## Scheda Dati

030PLBF1

Pulsante a chiave, bloccabile in 1 posizione sgancio con chiave K95, N.O.+N.C.



## Caratteristiche

|                         |  |
|-------------------------|--|
| <b>Gamma</b>            | Pulsanti a chiave Ø 30                       |
| <b>Componente</b>       | Bloccabili con chiave                        |
| <b>Codice</b>           | 030PLBF1                                     |
| <b>Descrizione</b>      | Pulsante a chiave, bloccabile in 1 posizione |
| <b>Peso</b>             | 179,0  |
| <b>Tariffa doganale</b> | 85365080                                     |
| <b>GTIN</b>             | 8052878031725                                |

## Dati tecnici

|  |  |
|--|--|
| <b>Approvals</b>                                   | CE, (UL-CSA 030F1-030FA-030FC-030FAA-030FCR only)  |
| <b>Compliance with standards</b>                   | IEC-EN60947-1, IEC-EN60947-5-1, UL508, CSA C22-2   |
| <b>Operating temperatures</b>                      | -25° ÷ +65°C                                       |
| <b>Protection degree</b>                           | IP65 (IEC-EN60529)                                 |
| <b>Mechanical durability</b>                       | 3.000.000 Operations                               |
| <b>Button/mushroom material (illuminated type)</b> | PC Polycarbonate                                   |
| <b>External bezel material</b>                     | Chromed zinc alloy                                 |
| <b>Housing material</b>                            | PA Polyammide + chrome                             |
| <b>Fixing diameter</b>                             | 30.5mm - Thickness 1÷6mm                           |
| <b>Tightening torque</b>                           | 2 ÷ 3Nm (17.7 ÷ 26.6 Lb-in)                        |
| <b>Actuation type</b>                              | Spring return                                      |
| <b>Protection against electric shock</b>           | Class II (IEC-EN61140)                             |
| <b>Contact block</b>                               | Included   |
| <b>Contact block characteristics</b>               | See technical features of 030FAP - 030FCP - 030F1P |
| <b>Warranty period</b>                             | 18 months  |

## Disegni tecnici

