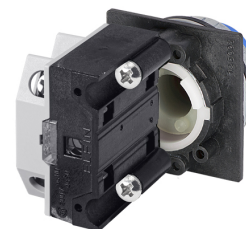


Datasheet

030RRBLF1

Projecting push-button, blue, N.O.+N.C.



Features

Range	Non-illuminated push-buttons Ø 30
components	Projecting
Code	030RRBLF1
Description	Projecting push-button, blue, N.O.+N.C.
Colour	Blu
Weight - gr	93.0
Customs Tariff	85365080
GTIN	8052878034436

Datasheet

Approvals	CE, UL, CSA
Compliance with standards	IEC-EN60947-1, IEC-EN60947-5-1, UL508, CSA C22-2
Operating temperatures	-25° ÷ +65°C
Protection degree	IP65 (IEC-EN60529)
Mechanical durability	3.000.000 Operations
Button/mushroom material (illuminated type)	PC Polycarbonate
Housing material	PA Polyamide
External bezel material	Chromed zinc alloy
Fixing diameter	30.5mm - Thickness 1÷6mm
Tightening torque	2 ÷ 3Nm (17.7 ÷ 26.6 Lb-in)
Actuation type	Spring return
Protection against electric shock	Class II (IEC-EN61140)
Contact block	Included
Contact block characteristics	See technical features of 030FAP - 030FCP - 030F1P
Warranty period	18 months

Technical drawings

