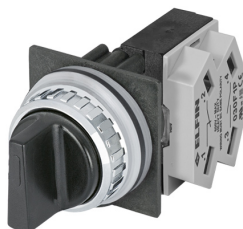


## Hoja de datos

030RSMNBF1

Selector de mando, negro, 2 posiciones, Cam B, N.O.+N.C.



## Características

<b>Rango</b>	Selector de mando Ø 30
<b>Componente</b>	Selector de mando con 2 posiciones
<b>Código</b>	030RSMNBF1
<b>Descripción</b>	Selector de mando, negro, 2 posiciones, Cam B, N.O.+N.C.
<b>Color</b>	Nero
<b>Peso</b>	92,0
<b>Arancel aduanero</b>	85365080
<b>GTIN</b>	8052878035051

## Datos técnicos

<b>Approvals</b>	CE, UL, CSA, EAC
<b>Compliance with standards</b>	IEC-EN60947-1, IEC-EN60947-5-1, UL508, CSA C22-2
<b>Operating temperatures</b>	-25° ÷ +65°C
<b>Protection degree</b>	IP65 (IEC-EN60529)
<b>Mechanical durability</b>	1.000.000 Operations
<b>Housing material</b>	PA Polyamide
<b>Knob or lever material</b>	PC Polycarbonate
<b>External bezel material</b>	Chromed zinc alloy
<b>Fixing diameter</b>	30.5mm - Thickness 1÷6mm
<b>Tightening torque</b>	2 ÷ 3Nm (17.7 ÷ 26.6 Lb-in)
<b>Protection against electric shock</b>	Class II (IEC-EN61140)
<b>Contact block</b>	Included
<b>Contact block characteristics</b>	See technical features of 030FAP - 030FCP - 030F1P
<b>Warranty period</b>	18 months

# Dibujos técnicos

## CAM B

