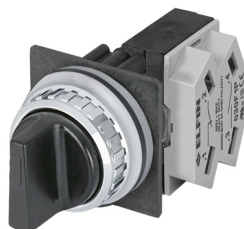


Datenblatt

030RSMNCF1S

Drehknopf-Wahlschalter, schwarz, 2 Positionen, Cam C, Federrücklauf von links



Merkmale

Baureihe	Drehknopf-Wahlschalter Ø 30
Komponenten	Drehknopf-Wahlschalter, 2 Positionen
Artikel-Nr.	030RSMNCF1S
Beschreibung	Drehknopf-Wahlschalter, schwarz, 2 Positionen, Cam C, Federrücklauf von links
Farbe	Nero
Gewicht - gr	85,0
Zolltarifnummer	85365080
GTIN	8052878035082

Dati tecnici

Approvals	CE, UL, CSA, EAC
Compliance with standards	IEC-EN60947-1, IEC-EN60947-5-1, UL508, CSA C22-2
Operating temperatures	-25° ÷ +65°C
Protection degree	IP65 (IEC-EN60529)
Mechanical durability	1.000.000 Operations
Housing material	PA Polyamide
Knob or lever material	PC Polycarbonate
External bezel material	Chromed zinc alloy
Fixing diameter	30.5mm - Thickness 1÷6mm
Tightening torque	2 ÷ 3Nm (17.7 ÷ 26.6 Lb-in)
Protection against electric shock	Class II (IEC-EN61140)
Contact block	Included
Contact block characteristics	See technical features of 030FAP - 030FCP - 030F1P
Warranty period	18 months

Disegni tecnici

CAM C

