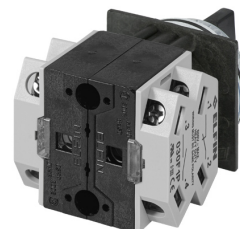
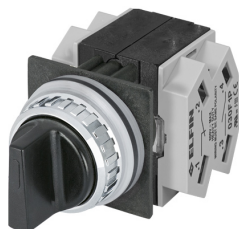


Datasheet

030RSMNO2F1C

Knob selector switch, black, 3-position, Cam O, spring return to Centre, 2 N.O.+2 N.C.



Features

Range	Non-illuminated knob selector switches Ø 30
components	3-position
Code	030RSMNO2F1C
Description	Knob selector switch, black, 3-position, Cam O, spring return to Centre, 2 N.O.+2 N.C.
Colour	Nero
Weight - gr	117.0
Customs Tariff	85365080
GTIN	8052878035143

Datasheet

Approvals	CE, UL, CSA, EAC
Compliance with standards	IEC-EN60947-1, IEC-EN60947-5-1, UL508, CSA C22-2
Operating temperatures	-25° ÷ +65°C
Protection degree	IP65 (IEC-EN60529)
Mechanical durability	1.000.000 Operations
Housing material	PA Polyamide
Knob or lever material	PC Polycarbonate
External bezel material	Chromed zinc alloy
Fixing diameter	30.5mm - Thickness 1÷6mm
Tightening torque	2 ÷ 3Nm (17.7 ÷ 26.6 Lb-in)
Protection against electric shock	Class II (IEC-EN61140)
Contact block	Included
Contact block characteristics	See technical features of 030FAP - 030FCP - 030F1P
Warranty period	18 months

Technical drawings

CAM 0

