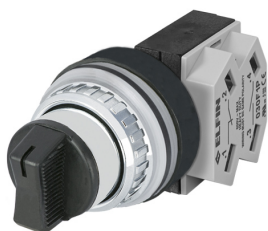


## Datablad

### 030SMNCF1S

Keuzeknop, zwart, 2 posities, Cam C, veerretour van L



## Kenmerken

|                     |                                                       |
|---------------------|-------------------------------------------------------|
| <b>Bereik</b>       | Niet-verlichte keuzeknoppen Ø 30                      |
| <b>Component</b>    | 2-positie keuzeknoppen                                |
| <b>Rubriek</b>      | 030SMNCF1S                                            |
| <b>Omschrijving</b> | Keuzeknop, zwart, 2 posities, Cam C, veerretour van L |
| <b>Kleur</b>        | Nero                                                  |
| <b>Gewicht</b>      | 100,0                                                 |
| <b>Douanetarief</b> | 85365080                                              |
| <b>GTIN</b>         | 8052878038571                                         |

## Technische gegevens

|                                          |                                                    |
|------------------------------------------|----------------------------------------------------|
| <b>Approvals</b>                         | CE, (UL-CSA 030F1-030FA-030FC-030FAA-030FCR only)  |
| <b>Compliance with standards</b>         | IEC-EN60947-1, IEC-EN60947-5-1, UL508, CSA C22-2   |
| <b>Operating temperatures</b>            | -25° ÷ +65°C                                       |
| <b>Protection degree</b>                 | IP65 (IEC-EN60529)                                 |
| <b>Mechanical durability</b>             | 1.000.000 Operations                               |
| <b>Housing material</b>                  | PA Polyamide                                       |
| <b>Knob or lever material</b>            | PC Polycarbonate                                   |
| <b>External bezel material</b>           | Chromed zinc alloy                                 |
| <b>Housing material</b>                  | PA Polyamide + chrome                              |
| <b>Fixing diameter</b>                   | 30.5mm - Thickness 1÷6mm                           |
| <b>Tightening torque</b>                 | 2 ÷ 3Nm (17.7 ÷ 26.6 Lb-in)                        |
| <b>Protection against electric shock</b> | Class II (IEC-EN61140)                             |
| <b>Contact block</b>                     | Included                                           |
| <b>Contact block characteristics</b>     | See technical features of 030FAP - 030FCP - 030F1P |
| <b>Warranty period</b>                   | 18 months                                          |

# Technische tekeningen

## CAM C

