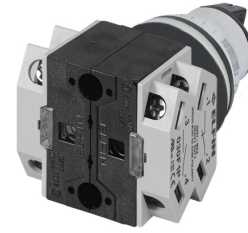
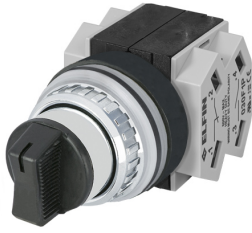


# Datasheet

030SMNQ2F1

Knob selector switch, black, 4-position, Cam Q, 2 N.O.+2 N.C.



## Features

|                       |   |
|-----------------------|---|
| <b>Range</b>          | Non-illuminated knob selector switches Ø 30                   |
| <b>components</b>     | 4-position  |
| <b>Code</b>           | 030SMNQ2F1  |
| <b>Description</b>    | Knob selector switch, black, 4-position, Cam Q, 2 N.O.+2 N.C. |
| <b>Colour</b>         | Nero  |
| <b>Weight - gr</b>    | 139.0   |
| <b>Customs Tariff</b> | 85365080  |
| <b>GTIN</b>           | 8052878038724   |

## Datasheet

|  |  |
|--|--|
| <b>Approvals</b>                         | CE, (UL-CSA 030F1-030FA-030FC-030FAA-030FCR only)  |
| <b>Compliance with standards</b>         | IEC-EN60947-1, IEC-EN60947-5-1, UL508, CSA C22-2   |
| <b>Operating temperatures</b>            | -25° ÷ +65°C                                       |
| <b>Protection degree</b>                 | IP65 (IEC-EN60529)                                 |
| <b>Mechanical durability</b>             | 1.000.000 Operations                               |
| <b>Housing material</b>                  | PA Polyamide                                       |
| <b>Knob or lever material</b>            | PC Polycarbonate                                   |
| <b>External bezel material</b>           | Chromed zinc alloy                                 |
| <b>Housing material</b>                  | PA Polyamide + chrome                              |
| <b>Fixing diameter</b>                   | 30.5mm - Thickness 1÷6mm                           |
| <b>Tightening torque</b>                 | 2 ÷ 3Nm (17.7 ÷ 26.6 Lb-in)                        |
| <b>Protection against electric shock</b> | Class II (IEC-EN61140)                             |
| <b>Contact block</b>                     | Included   |
| <b>Contact block characteristics</b>     | See technical features of 030FAP - 030FCP - 030F1P |
| <b>Warranty period</b>                   | 18 months  |

# Technical drawings

## CAM Q

