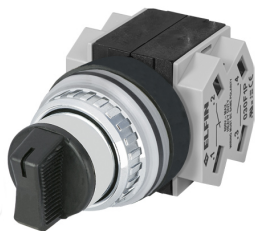


## Hoja de datos

030SMNR2F1

Selector de mando, negro, 5 posiciones, Cam R, 2 N.O.+2 N.C.



## Características

Rango	Selector de mando Ø 30
Componente	Selector de mando con 5 posiciones
Código	030SMNR2F1
Descripción	Selector de mando, negro, 5 posiciones, Cam R, 2 N.O.+2 N.C.
Color	Nero
Peso	139,0
Arancel aduanero	85365080
GTIN	8052878038748

## Datos técnicos

Approvals	CE, (UL-CSA 030F1-030FA-030FC-030FAA-030FCR only)
Compliance with standards	IEC-EN60947-1, IEC-EN60947-5-1, UL508, CSA C22-2
Operating temperatures	-25° ÷ +65°C
Protection degree	IP65 (IEC-EN60529)
Mechanical durability	1.000.000 Operations
Housing material	PA Polyamide
Knob or lever material	PC Polycarbonate
External bezel material	Chromed zinc alloy
Housing material	PA Polyamide + chrome
Fixing diameter	30.5mm - Thickness 1÷6mm
Tightening torque	2 ÷ 3Nm (17.7 ÷ 26.6 Lb-in)
Protection against electric shock	Class II (IEC-EN61140)
Contact block	Included
Contact block characteristics	See technical features of 030FAP - 030FCP - 030F1P
Warranty period	18 months

# Dibujos técnicos

## CAM R

