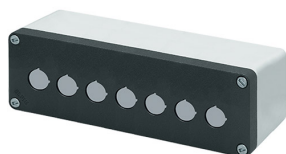


Datenblatt

040C0826-8EP7L

Bedienpult-Gehäuse Aluminium M10 85x260x85, 7 Bohrungen Ø 22, mit Kabeleingang



Merkmale

Baureihe	Bedienpult-Gehäuse Aluminium M10 85x260 mm
Komponenten	Deckel mit 7 Bohrungen Ø 22
Artikel-Nr.	040C0826-8EP7L
Beschreibung	Bedienpult-Gehäuse Aluminium M10 85x260x85, 7 Bohrungen Ø 22, mit Kabeleingang
Farbe	Grigio RAL7016 / Grigio RAL7035
Gewicht - gr	894,0
Zolltarifnummer	85381000
GTIN	8052878041786

Dati tecnici

Approvals	CE, UL, CSA
UL/CSA Approval	Item will be labelled only upon specific request
Compliance with standards	IEC-EN62208, UL508, CSA C22.2 No.14-13
Operating temperatures	-40° ÷ +100°C
Protection degree	IP66 - IP69 - TYPE 4, 4X (IEC-EN60529 - NEMA 250)
Protection against impact	IK09 (IEC-EN62262)
Manufacturing process	Diecasting
Enclosure material	Aluminum Al Si11 Cu2 (EN AC46100)
Gasket material	Nitrile rubber
Screw material	Zamak zinc alloy
Screw type	M10 - slotted head type 6mm flat blade
Tightening torque	3Nm (26.6 Lb-in)
Painting	Polyester powder coating (except unpainted models)
Protection against electric shock	Class I (IEC-EN61140)
Fitted for outdoor application	yes
Warranty period	18 months

Disegni tecnici

