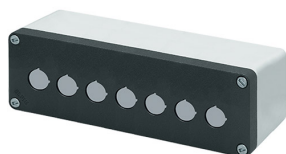


## Scheda Dati

040C0826-8EP7L

Doos knoppenbord aluminium M10 85x260x85, 7 gaten Ø 22, met kabelingang



## Caratteristiche

<b>Bereik</b>	Dozen knoppenbord aluminium M10 85x260 mm
<b>Componente</b>	Deksel met 7 gaten Ø 22
<b>Rubriek</b>	040C0826-8EP7L
<b>Omschrijving</b>	Doos knoppenbord aluminium M10 85x260x85, 7 gaten Ø 22, met kabelingang
<b>Kleur</b>	Grigio RAL7016 / Grigio RAL7035
<b>Peso</b>	894,0
<b>Tariffa doganale</b>	85381000
<b>GTIN</b>	8052878041786

## Dati tecnici

<b>Approvals</b>	CE, UL, CSA
<b>UL/CSA Approval</b>	Item will be labelled only upon specific request
<b>Compliance with standards</b>	IEC-EN62208, UL508, CSA C22.2 No.14-13
<b>Operating temperatures</b>	-40° ÷ +100°C
<b>Protection degree</b>	IP66 - IP69 - TYPE 4, 4X (IEC-EN60529 - NEMA 250)
<b>Protection against impact</b>	IK09 (IEC-EN62262)
<b>Manufacturing process</b>	Diecasting
<b>Enclosure material</b>	Aluminum Al Si11 Cu2 (EN AC46100)
<b>Gasket material</b>	Nitrile rubber
<b>Screw material</b>	Zamak zinc alloy
<b>Screw type</b>	M10 - slotted head type 6mm flat blade
<b>Tightening torque</b>	3Nm (26.6 Lb-in)
<b>Painting</b>	Polyester powder coating (except unpainted models)
<b>Protection against electric shock</b>	Class I (IEC-EN61140)
<b>Fitted for outdoor application</b>	yes
<b>Warranty period</b>	18 months

## Disegni tecnici

---

