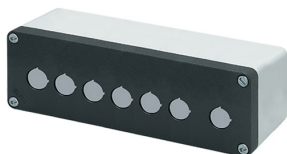


Scheda Dati

040C0826-8EP7LC

Caixa botoeira alumínio M10 85x260x85, 7 furos Ø 22, com entrada cabo



Caratteristiche

| | |
|-------------------------|---|
| Gama | Caixas botoeiras alumínio M10 85x260 mm |
| Componente | Tampa com 7 furos Ø 22 |
| Código | 040C0826-8EP7LC |
| Descrição | Caixa botoeira alumínio M10 85x260x85, 7 furos Ø 22, com entrada cabo |
| Cor | Grigio RAL7016 / Grigio RAL7035 |
| Peso | 894,0 |
| Tariffa doganale | 85381000 |
| GTIN | 8052878041793 |

Dati tecnici

| | |
|--|--|
| Approvals | CE, UL, CSA |
| UL/CSA Approval | Item will be labelled only upon specific request |
| Compliance with standards | IEC-EN62208, UL508, CSA C22.2 No.14-13 |
| Operating temperatures | -40° ÷ +100°C |
| Protection degree | IP66 - IP69 - TYPE 4, 4X (IEC-EN60529 - NEMA 250) |
| Protection against impact | IK09 (IEC-EN62262) |
| Manufacturing process | Diecasting |
| Enclosure material | Aluminum Al Si11 Cu2 (EN AC46100) |
| Gasket material | Nitrile rubber |
| Screw material | Zamak zinc alloy |
| Screw type | M10 - slotted head type 6mm flat blade |
| Tightening torque | 3Nm (26.6 Lb-in) |
| Painting | Polyester powder coating (except unpainted models) |
| Protection against electric shock | Class I (IEC-EN61140) |
| Fitted for outdoor application | yes |
| Warranty period | 18 months |

Disegni tecnici

