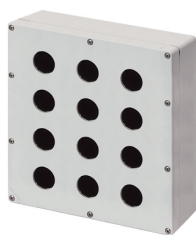


Datenblatt

040C2325-1S12

Bedienpult-Gehäuse Aluminium M4 230x257x100, 12 Bohrungen Ø 30, ohne Kabeleingang



Merkmale

Baureihe	Bedienpult-Gehäuse Aluminium M4 230x257 mm
Komponenten	Deckel mit 12 Bohrungen Ø 30
Artikel-Nr.	040C2325-1S12
Beschreibung	Bedienpult-Gehäuse Aluminium M4 230x257x100, 12 Bohrungen Ø 30, ohne Kabeleingang
Farbe	Grigio RAL7035
Gewicht - gr	2114,0
Zolltarifnummer	85381000
GTIN	8052878046637

Technische Daten

Approvals	CE, UL, CSA, EAC
UL/CSA Approval	Item will be labelled only upon specific request
Compliance with standards	IEC-EN62208, UL508, CSA C22.2 No.14-13
Operating temperatures	-40° ÷ +100°C
Protection degree	IP66 - IP69 - TYPE 4, 4X (IEC-EN60529 - NEMA 250)
Protection against impact	IK09 (IEC-EN62262)
Manufacturing process	Shell gravity diecasting
Enclosure material	Aluminum Al Si12 Cu (EN AC47000)
Gasket material	Cork rubber
Screw material	Stainless steel AISI 304
Tightening torque	2,5Nm (22.1 Lb-in)
Painting	Polyester powder coating (except unpainted models)
Protection against electric shock	Class I (IEC-EN61140)
Fitted for outdoor application	yes
Warranty period	18 months

Technische Zeichnungen

