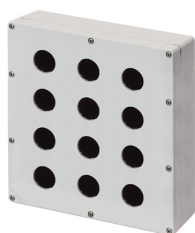


## Datenblatt

040C2325-8S12

Bedienpult-Gehäuse Aluminium M4 230x257x80, 12 Bohrungen Ø 30, ohne Kabeleingang



## Merkmale

<b>Baureihe</b>	Bedienpult-Gehäuse Aluminium M4 230x257 mm
<b>Komponenten</b>	Deckel mit 12 Bohrungen Ø 30
<b>Artikel-Nr.</b>	040C2325-8S12
<b>Beschreibung</b>	Bedienpult-Gehäuse Aluminium M4 230x257x80, 12 Bohrungen Ø 30, ohne Kabeleingang
<b>Farbe</b>	Grigio RAL7035
<b>Gewicht - gr</b>	1840,0
<b>Zolltarifnummer</b>	85381000
<b>GTIN</b>	8052878046866

## Technische Daten

<b>Approvals</b>	CE, UL, CSA, EAC
<b>UL/CSA Approval</b>	Item will be labelled only upon specific request
<b>Compliance with standards</b>	IEC-EN62208, UL508, CSA C22.2 No.14-13
<b>Operating temperatures</b>	-40° ÷ +100°C
<b>Protection degree</b>	IP66 - IP69 - TYPE 4, 4X (IEC-EN60529 - NEMA 250)
<b>Protection against impact</b>	IK09 (IEC-EN62262)
<b>Manufacturing process</b>	Shell gravity diecasting
<b>Enclosure material</b>	Aluminum Al Si12 Cu (EN AC47000)
<b>Gasket material</b>	Cork rubber
<b>Screw material</b>	Stainless steel AISI 304
<b>Tightening torque</b>	2,5Nm (22.1 Lb-in)
<b>Painting</b>	Polyester powder coating (except unpainted models)
<b>Protection against electric shock</b>	Class I (IEC-EN61140)
<b>Fitted for outdoor application</b>	yes
<b>Warranty period</b>	18 months

## Technische Zeichnungen

