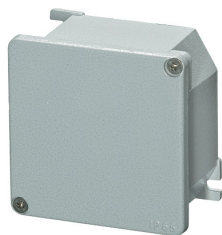


Hoja de datos

040D1010-6

Caja de derivación aluminio 100x100x59



Características

Rango	Cajas de derivación aluminio 100x100 mm
Componente	Caja de derivación 100x100
Código	040D1010-6
Descripción	Caja de derivación aluminio 100x100x59
Color	Grigio RAL7040
Peso	294,0
Arancel aduanero	85381000
GTIN	8052878046996

Datos técnicos

Approvals	CE, EAC
Compliance with standards	CEI EN60670, CEI EN60670-22, CEI EN23-48
Operating temperatures	-25° ÷ +90°C
Protection degree	IP66 - IP69 (IEC-EN60529)
Protection against impact	IK08 (IEC-EN62262)
Enclosure material	Aluminium alloy EN AB 461H0 (UNI EN 1676)
Gasket material	Polyurethane foam
Screw material	Stainless steel AISI 304
Tightening torque	1 ÷ 2,5Nm (8.8÷22.1 Lb-in)
Painting	Polyester powder coating
Mist saline resistance	500 hours (ASTM B117) / 700 hours (ISO 9227)
Fitted for outdoor application	yes
Warranty period	18 months

Dibujos técnicos

