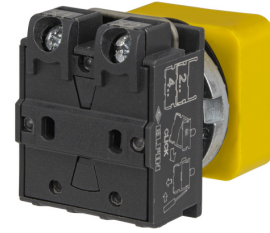
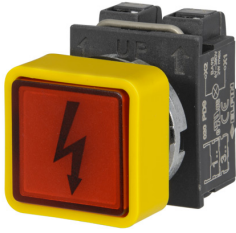


# Datasheet

## 050ULSQ9

Illuminated safety unit, direct supply, 400V AC/DC 2W, BA9S LED lamp not included



## Features

<b>Range components</b>	Loose parts Illuminated safety unit
<b>Code</b>	050ULSQ9
<b>Description</b>	Illuminated safety unit, direct supply, 400V AC/DC 2W, BA9S LED lamp not included
<b>Colour</b>	Rosso
<b>Weight - gr</b>	38.0
<b>Customs Tariff</b>	85365080
<b>GTIN</b>	8052878068691

## Datasheet

<b>Approvals</b>	CE
<b>Compliance with standards</b>	IEC-ENC60947-1, IEC-EN60947-5-1
<b>Operating temperatures</b>	-25° ÷ +65°C
<b>Protection against impact</b>	IK03 (IEC-EN62262)
<b>Protection degree</b>	IP65 front light / IP20 terminals (IEC-EN60529)
<b>Shock resistance</b>	30g duration=18ms (EN-IEC 60068-2-27)
<b>Shock resistance</b>	50g duration=11ms (EN-IEC 60068-2-27)
<b>Vibration resistance</b>	5g f= 2...500Hz (EN-IEC 60068-2-6)
<b>Housing material</b>	PA Polyamide
<b>Lens material</b>	PC Polycarbonate
<b>Locking ring material</b>	Zamak zinc alloy
<b>Fixing diameter</b>	22.5mm - Thickness 1÷6mm
<b>Terminal screw</b>	Tightening torque 0.8÷1 Nm (IEC-EN60947-1)
<b>Terminal screw head shape</b>	Combined:cross Phillips2 or slotted flat D.5mm max
<b>Terminal screw material</b>	Zinc plated steel
<b>Terminal screw connections</b>	min 1x0.5mm <sup>2</sup> (20AWG) - max 2x2.5mm <sup>2</sup> (14AWG)
<b>Cable lugs</b>	Fork type "spring spade" for screw M3.5 / W=6.4mm
<b>Bulb type</b>	Ba9S 400V - 2W max (not included)
<b>Rated insulation voltage</b>	Ui 690V - Uimp 4KV (IEC-EN60947-1)
<b>Protection against electric shock</b>	Class II (IEC-EN61140)

---

**Warranty period**

18 months

---

## Technical drawings

