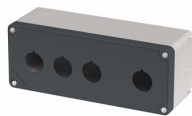


## Datenblatt

080T0718-6P4LC

Drucktastergehäuse in PA + Glasfaser 70x180x63, 3 Bohrungen d22



## Merkmale

|                        |   |
|------------------------|---|
| <b>Baureihe</b>        | Drucktastergehäuse, Serie Techno 70x180                         |
| <b>Komponenten</b>     | Deckel mit 4 Bohrungen D22                                      |
| <b>Artikel-Nr.</b>     | 080T0718-6P4LC  |
| <b>Beschreibung</b>    | Drucktastergehäuse in PA + Glasfaser 70x180x63, 3 Bohrungen d22 |
| <b>Farbe</b>           | Grigio RAL7016 / Grigio RAL7035                                 |
| <b>Gewicht - gr</b>    | 222,0   |
| <b>Zolltarifnummer</b> | 85381000  |
| <b>GTIN</b>            | 8052878075958   |

## Technische Daten

|  |   |
|--|---|
| <b>Approvals</b>                         | CE, EAC   |
| <b>Compliance with standards</b>         | UNI EN ISO 13850,UNI EN ISO 12100,IEC-EN60947-5-5 |
| <b>Compliance with standards</b>         | IEC-ENC60947-1, IEC-EN60947-5-1                   |
| <b>Operating temperatures</b>            | -35° ÷ +80°C                                      |
| <b>Protection against impact</b>         | IK09 (IEC-EN62262)                                |
| <b>Protection degree</b>                 | IP66 - IP67 - IP69 (IEC-EN60529)                  |
| <b>Enclosure material</b>                | PA Polyamide - glass fiber reinforced             |
| <b>Gasket material</b>                   | TPE thermoplastic elastomer                       |
| <b>Screw material</b>                    | Stainless steel AISI 304                          |
| <b>Screw type</b>                        | Torx T15 slotted head type                        |
| <b>Enclosure thickness</b>               | 3,5mm   |
| <b>Tightening torque</b>                 | 0.6 ÷ 0.8Nm (5.3÷7.1 Lb-in)                       |
| <b>Protection against electric shock</b> | Class II (IEC-EN61140)                            |
| <b>Combustion behaviour</b>              | HB (UL94)   |
| <b>Combustion behaviour</b>              | 650°(IEC-EN60695-2-11)                            |
| <b>Fitted for outdoor application</b>    | yes   |
| <b>Warranty period</b>                   | 18 months   |

## Technische Zeichnungen

