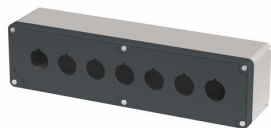


## Datasheet

080T0727-6P7L

Push-button box in PA + glass fibre 70x267x63, 7 holes d22



## Features

|                       |  |
|-----------------------|--|
| <b>Range</b>          | Push-button boxes, Techno series 70x267                    |
| <b>components</b>     | Cover with 7 holes D22                                     |
| <b>Code</b>           | 080T0727-6P7L  |
| <b>Description</b>    | Push-button box in PA + glass fibre 70x267x63, 7 holes d22 |
| <b>Colour</b>         | Grigio RAL7016 / Grigio RAL7035                            |
| <b>Weight - gr</b>    | 315.0  |
| <b>Customs Tariff</b> | 85381000   |
| <b>GTIN</b>           | 8052878075972  |

## Datasheet

|  |   |
|--|---|
| <b>Approvals</b>                         | CE, EAC   |
| <b>Compliance with standards</b>         | UNI EN ISO 13850,UNI EN ISO 12100,IEC-EN60947-5-5 |
| <b>Compliance with standards</b>         | IEC-ENC60947-1, IEC-EN60947-5-1                   |
| <b>Operating temperatures</b>            | -35° ÷ +80°C                                      |
| <b>Protection against impact</b>         | IK09 (IEC-EN62262)                                |
| <b>Protection degree</b>                 | IP66 - IP67 - IP69 (IEC-EN60529)                  |
| <b>Enclosure material</b>                | PA Polyamide - glass fiber reinforced             |
| <b>Gasket material</b>                   | TPE thermoplastic elastomer                       |
| <b>Screw material</b>                    | Stainless steel AISI 304                          |
| <b>Screw type</b>                        | Torx T15 slotted head type                        |
| <b>Enclosure thickness</b>               | 3,5mm   |
| <b>Tightening torque</b>                 | 0.6 ÷ 0.8Nm (5.3÷7.1 Lb-in)                       |
| <b>Protection against electric shock</b> | Class II (IEC-EN61140)                            |
| <b>Combustion behaviour</b>              | HB (UL94)   |
| <b>Combustion behaviour</b>              | 650°(IEC-EN60695-2-11)                            |
| <b>Fitted for outdoor application</b>    | yes   |
| <b>Warranty period</b>                   | 18 months   |

## Technical drawings

