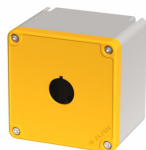


Datenblatt

080T0909-7GP1C

Drucktastergehäuse in PA + Glasfaser 90x90x74, 1 Bohrung d22, gelb



Merkmale

Baureihe	Drucktastergehäuse, Serie Techno 90x90
Komponenten	Deckel mit 1 Bohrungen D22
Artikel-Nr.	080T0909-7GP1C
Beschreibung	Drucktastergehäuse in PA + Glasfaser 90x90x74, 1 Bohrung d22, gelb
Farbe	Giallo RAL1003 / Grigio RAL7035
Gewicht - gr	226,0
Zolltarifnummer	85381000
GTIN	8052878074937

Technische Daten

Approvals	CE, EAC
Compliance with standards	IEC-EN62208
Operating temperatures	-35° ÷ +80°C
Protection degree	IP67 - IP69 (IEC-EN60529)
Protection against impact	IK09 (IEC-EN62262)
Enclosure material	PA Polyamide - glass fiber reinforced
Gasket material	TPE thermoplastic elastomer
Screw material	Stainless steel AISI 304
Screw type	HEX 3 slotted head - M4 thread
Threaded bushing material	Brass OT58 - M4 thread
Enclosure thickness	3,5mm
Tightening torque	0.6 ÷ 0.8Nm (5.3÷7.1 Lb-in)
Protection against electric shock	Class II (IEC-EN61140)
Halogen-free	yes
Combustion behaviour	HB (UL94)
Combustion behaviour	650°(IEC-EN60695-2-11)
Fitted for outdoor application	yes
Warranty period	18 months

Technische Zeichnungen

