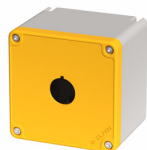


Datenblatt

080TU0909-7GP1C

Drucktastergehäuse in PA + Glasfaser 90x90x74, 1 Bohrung d22, gelb, UL



Merkmale

| | |
|------------------------|--|
| Baureihe | Drucktastergehäuse, Serie Techno 90x90 |
| Komponenten | Deckel mit 1 Bohrungen D22 |
| Artikel-Nr. | 080TU0909-7GP1C |
| Beschreibung | Drucktastergehäuse in PA + Glasfaser 90x90x74, 1 Bohrung d22, gelb, UL |
| Farbe | Giallo RAL1003 / Grigio RAL7035 |
| Gewicht - gr | 226,0 |
| Zolltarifnummer | 85381000 |
| GTIN | 8052878074944 |

Technische Daten

| | |
|--|---------------------------------------|
| Approvals | CE, UL, CSA, EAC |
| Compliance with standards | IEC-EN62208, UL50, UL50E |
| Operating temperatures | -35° ÷ +80°C |
| Protection degree | IP67 - IP69 (IEC-EN60529) |
| Protection against impact | IK09 (IEC-EN62262) |
| Enclosure material | PA Polyamide - glass fiber reinforced |
| Gasket material | TPE thermoplastic elastomer |
| Screw material | Stainless steel AISI 304 |
| Screw type | HEX 3 slotted head - M4 thread |
| Threaded bushing material | Stainless steel AISI 304 - M4 thread |
| Enclosure thickness | 3,5mm |
| Tightening torque | 0.6 ÷ 0.8Nm (5.3÷7.1 Lb-in) |
| Protection against electric shock | Class II (IEC-EN61140) |
| Halogen-free | yes |
| Combustion behaviour | 5VA (UL50 - UL746C) |
| Combustion behaviour | 960°(IEC-EN60695-2-11) |
| Combustion behaviour | V0 (UL94) |
| Fitted for outdoor application | yes |
| Warranty period | 18 months |

Technische Zeichnungen

