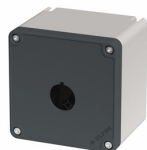


Datenblatt

080TU0909-7P1

Drucktastergehäuse in PA + Glasfaser 90x90x74, 1 Bohrung d22, UL



Merkmale

Baureihe	Drucktastergehäuse, Serie Techno 90x90
Komponenten	Deckel mit 1 Bohrungen D22
Artikel-Nr.	080TU0909-7P1
Beschreibung	Drucktastergehäuse in PA + Glasfaser 90x90x74, 1 Bohrung d22, UL
Farbe	Grigio RAL7016 / Grigio RAL7035
Gewicht - gr	226,0
Zolltarifnummer	85381000
GTIN	8052878074951

Technische Daten

Approvals	CE, UL, CSA, EAC
Compliance with standards	IEC-EN62208, UL50, UL50E
Operating temperatures	-35° ÷ +80°C
Protection degree	IP67 - IP69 (IEC-EN60529)
Protection against impact	IK09 (IEC-EN62262)
Enclosure material	PA Polyamide - glass fiber reinforced
Gasket material	TPE thermoplastic elastomer
Screw material	Stainless steel AISI 304
Screw type	HEX 3 slotted head - M4 thread
Threaded bushing material	Stainless steel AISI 304 - M4 thread
Enclosure thickness	3,5mm
Tightening torque	0.6 ÷ 0.8Nm (5.3÷7.1 Lb-in)
Protection against electric shock	Class II (IEC-EN61140)
Halogen-free	yes
Combustion behaviour	5VA (UL50 - UL746C)
Combustion behaviour	960°(IEC-EN60695-2-11)
Combustion behaviour	V0 (UL94)
Fitted for outdoor application	yes
Warranty period	18 months

Technische Zeichnungen

