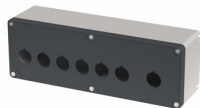


## Datenblatt

080TU0927-7P7LC

Drucktastergehäuse in PA + Glasfaser 90x267x74, 7 Bohrungen d22, UL



## Merkmale

<b>Baureihe</b>	Drucktastergehäuse, Serie Techno 90x267
<b>Komponenten</b>	Deckel mit 7 Bohrungen D22
<b>Artikel-Nr.</b>	080TU0927-7P7LC
<b>Beschreibung</b>	Drucktastergehäuse in PA + Glasfaser 90x267x74, 7 Bohrungen d22, UL
<b>Farbe</b>	Grigio RAL7016 / Grigio RAL7035
<b>Gewicht - gr</b>	226,0
<b>Zolltarifnummer</b>	85381000
<b>GTIN</b>	8052878076603

## Dati tecnici

<b>Approvals</b>	CE, UL, CSA, EAC
<b>Compliance with standards</b>	IEC-EN62208, UL50, UL50E
<b>Operating temperatures</b>	-35° ÷ +80°C
<b>Protection degree</b>	IP67 - IP69 (IEC-EN60529)
<b>Protection against impact</b>	IK09 (IEC-EN62262)
<b>Enclosure material</b>	PA Polyamide - glass fiber reinforced
<b>Gasket material</b>	TPE thermoplastic elastomer
<b>Screw material</b>	Stainless steel AISI 304
<b>Screw type</b>	Torx T15 slotted head type
<b>Screw type</b>	HEX 3 slotted head - M4 thread
<b>Threaded bushing material</b>	Stainless steel AISI 304 - M4 thread
<b>Enclosure thickness</b>	3,5mm
<b>Tightening torque</b>	0.6 ÷ 0.8Nm (5.3÷7.1 Lb-in)
<b>Protection against electric shock</b>	Class II (IEC-EN61140)
<b>Halogen-free</b>	yes
<b>Combustion behaviour</b>	5VA (UL50 - UL746C)
<b>Combustion behaviour</b>	960°(IEC-EN60695-2-11)
<b>Combustion behaviour</b>	V0 (UL94)
<b>Fitted for outdoor application</b>	yes
<b>Warranty period</b>	18 months

## Disegni tecnici

