

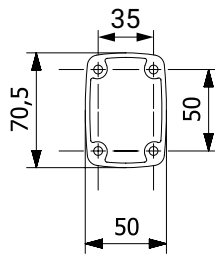
# Sistemi di sospensione serie 70 Suspension systems series 70

## Profilo di alluminio 50X70 / Aluminium profile 50x70



Lunghezza / Length mm 350  
Lunghezza / Length mm 500  
Lunghezza / Length mm 750  
Lunghezza / Length mm 1000  
Lunghezza / Length mm 1500  
Lunghezza / Length mm 2000

mat	col	g	cod
Al	7035	-	060S070B0350
Al	7035	-	060S070B0500
Al	7035	-	060S070B0750
Al	7035	-	060S070B1000
Al	7035	-	060S070B1500
Al	7035	-	060S070B2000

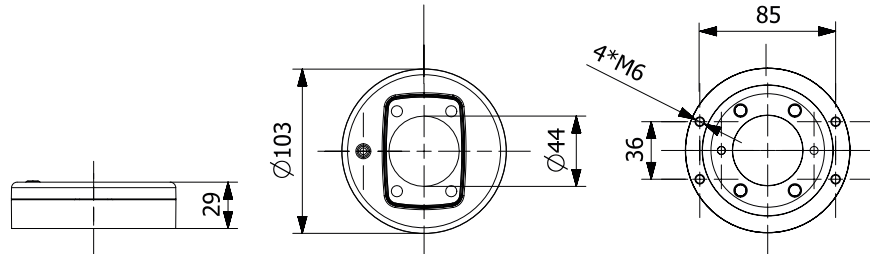


## Flange / Flanges



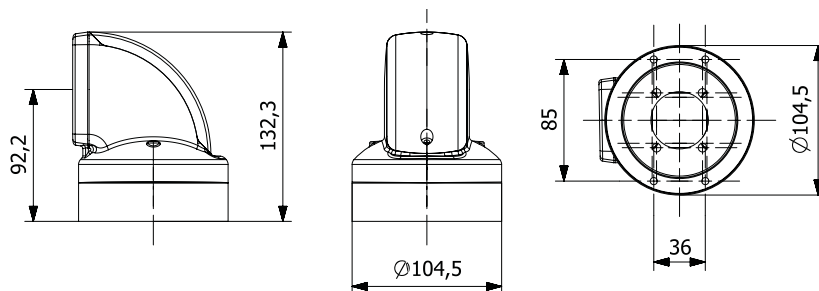
Flangia girevole/  
Swivel flange

mat	col	g	cod
Al	7035	750	060S070F320



Flangia angolare 90° girevole/  
Swivel 90° angular flange

mat	col	g	cod
Al	7035/16	1380	060S070F400

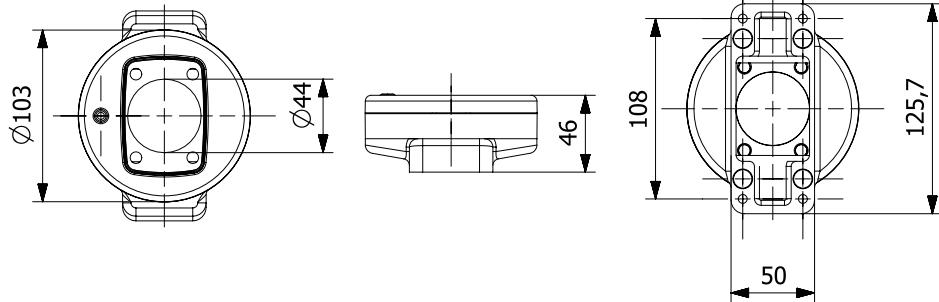


# Sistemi di sospensione serie 70 Suspension systems series 70

## Flange / Flanges



Flangia girevole a base rettangolare/  
Rectangular base swivel flange

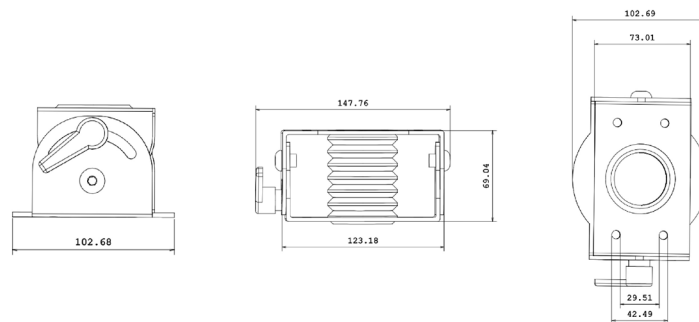


mat col g cod

Al 7035 900 060S070F830

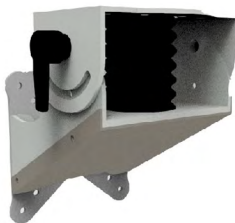


Adattatore per inclinazione regolabile /  
Adapter for adjustable tilt



mat col g cod

Al 7035 900 060S070F835

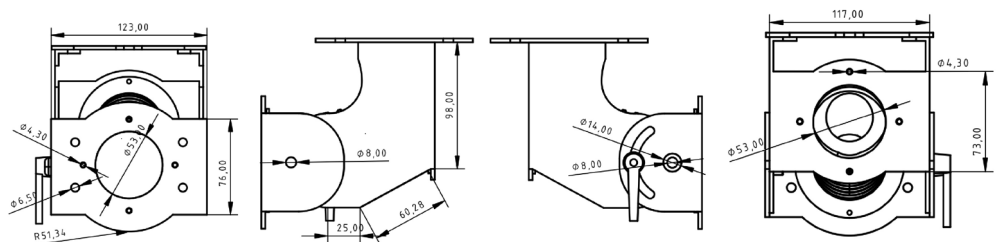


Adattatore inclinazione regolabile c/ vesa  
Adapter for adjustable tilt w/ vesa

dim. 50 x 50

mat col g cod

Al 7035 - 060S070F836

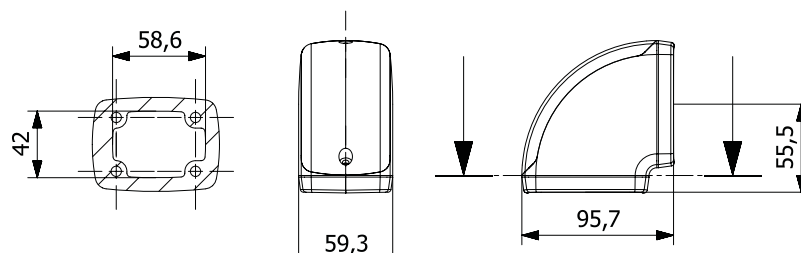


# Sistemi di sospensione serie 70 Suspension systems series 70

## Giunti / Joints



Giunto angolare 90° /  
90° angular joint

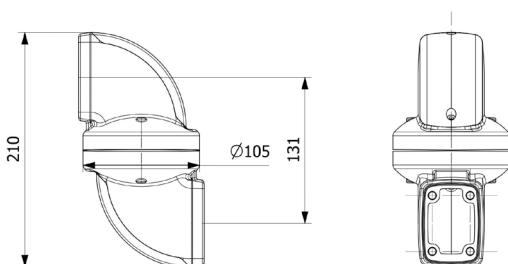


mat col g cod

Al 7035/7016 280 060S070G420



Giunto a snodo girevole /  
Swivel joint



mat col g cod

Al 7035/7016 1650 060S070G500

# Sistemi di sospensione serie 70 Suspension systems series 70

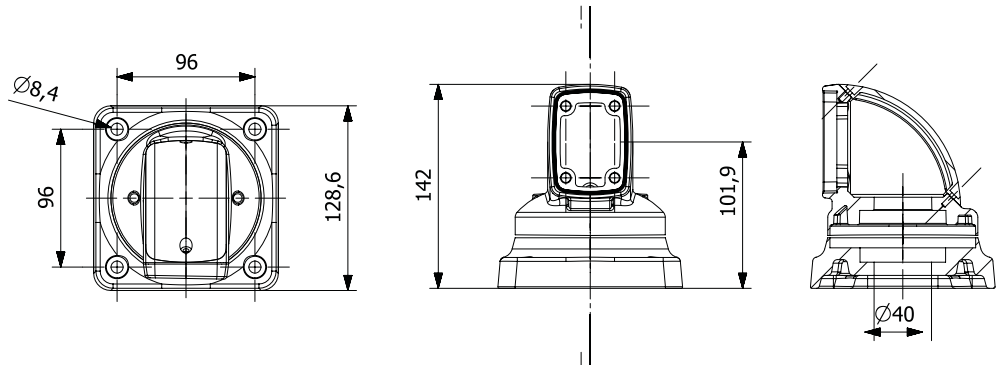
## Montanti / Bases



Montante angolare 90° girevole /  
Swivel 90° angular base

mat col g cod

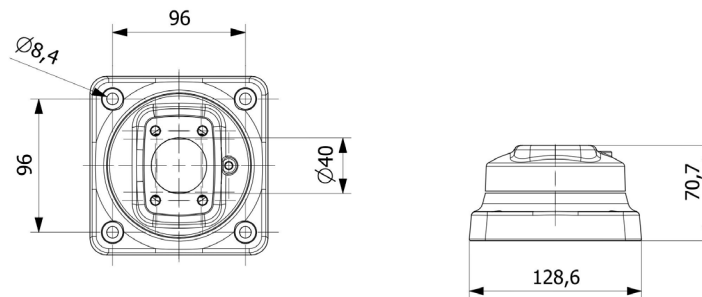
Al 7035/7016 1700 060S070M600



Montante girevole /  
Swivel base

mat col g cod

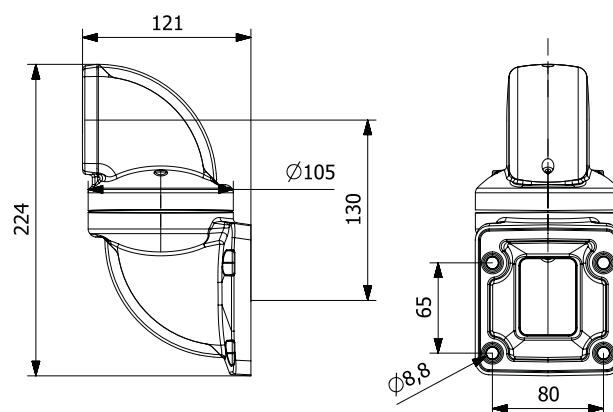
Al 7035 1600 060S070M610



Montante a parete a snodo girevole /  
Wall-mount swivel base

mat col g cod

Al 7035/7016 1650 060S070M700



# Sistemi di sospensione serie 70 Suspension systems series 70

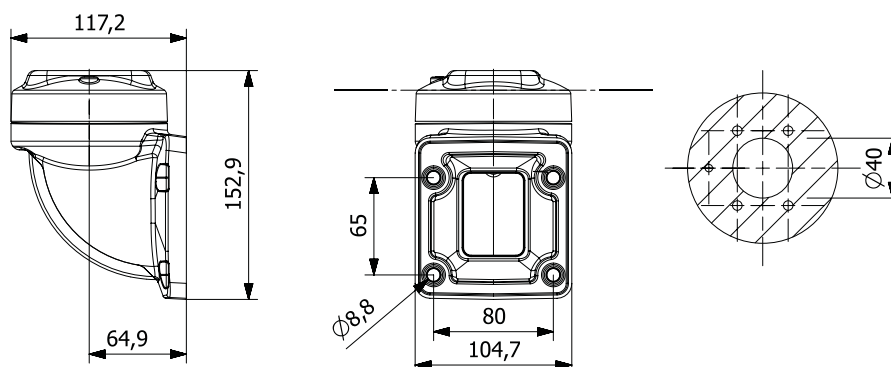
## Montanti / Bases



Montante a parete angolare 90° girevole /  
Wall-mount swivel 90° angular base

mat col g cod

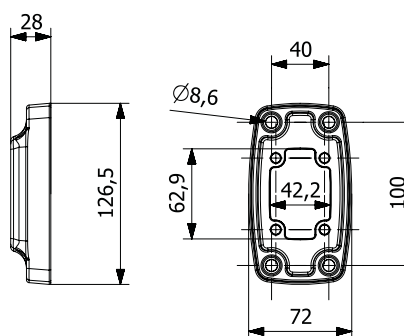
Al 7035/7016 1700 **060S070M710**



Montante fisso/  
Fixed-mount base

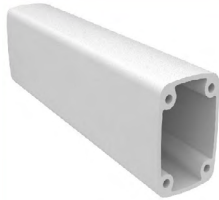
mat col g cod

Al 7035 220 **060S070M800**



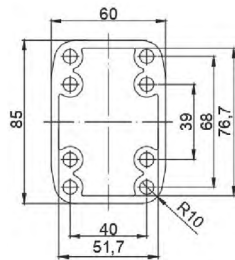
# Sistemi di sospensione serie 85 Suspension systems series 85

## Profilo di alluminio 60X85 / Aluminium profile 60x85



Lunghezza / Length mm 350  
Lunghezza / Length mm 500  
Lunghezza / Length mm 750  
Lunghezza / Length mm 1000  
Lunghezza / Length mm 1500  
Lunghezza / Length mm 2000

mat	col	g	cod
Al	7035	-	060S085B0350
Al	7035	-	060S085B0500
Al	7035	-	060S085B0750
Al	7035	-	060S085B1000
Al	7035	-	060S085B1500
Al	7035	-	060S085B2000

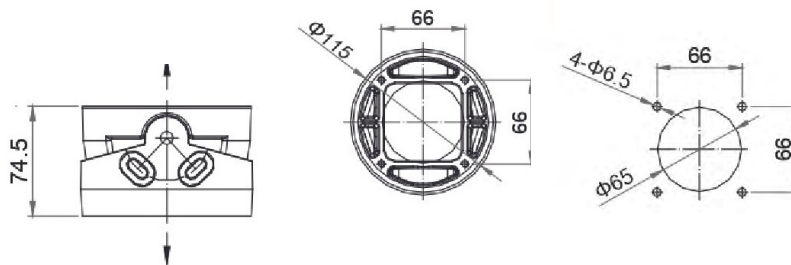


## Flange / Flanges



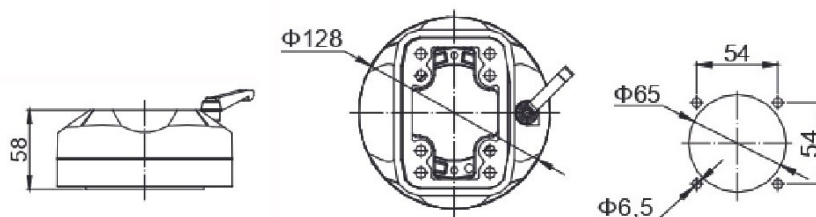
Adattatore per inclinazione regolabile  $\pm 15^\circ$  /  
Adapter for adjustable tilt  $\pm 15^\circ$

mat	col	g	cod
Al	7035	1100	060S085F8060



Flangia girevole /  
Swivel flange

mat	col	g	cod
Al	7035	700	060S085F8090



# Sistemi di sospensione serie 85 Suspension systems series 85

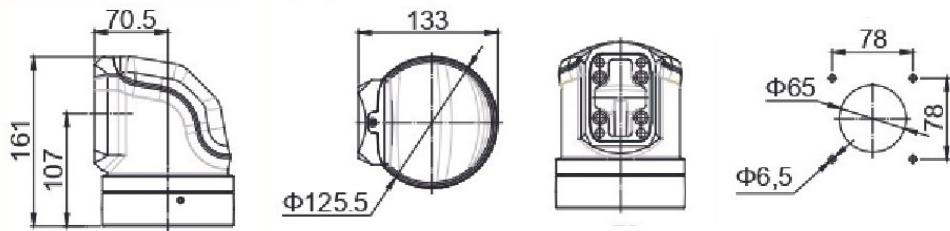
## Flange / Flanges



Flangia angolare 90° girevole/  
Swivel 90° angular flange

mat col g cod

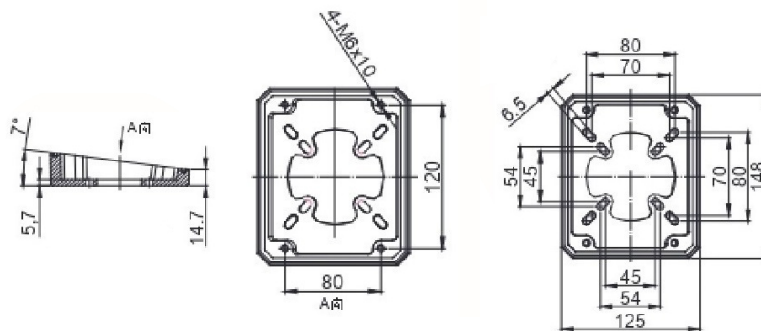
Al 7035 2300 060S085F8150



Adattatore per inclinazione 10°  
Adapter for tilt 10°

mat col g cod

Al 7035 400 060S085F8165

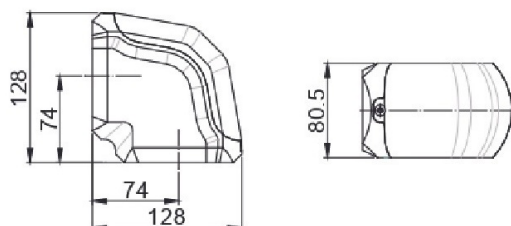


# Sistemi di sospensione serie 85 Suspension systems series 85

## Giunti / Joints



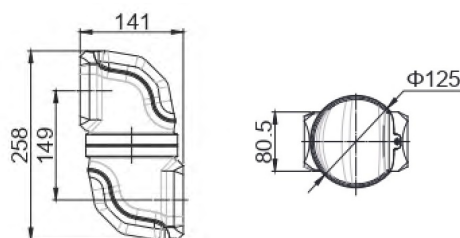
Giunto angolare 90° /  
90° angular joint



mat	col	g	cod
Al	7035	700	060S085G8100



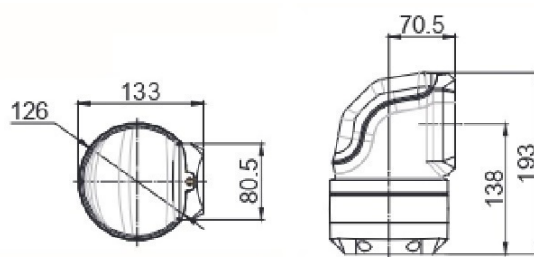
Giunto a snodo girevole /  
Swivel joint



mat	col	g	cod
Al	7035	2700	060S085G8130



Giunto angolare 90° girevole /  
90° angular swivel joint



mat	col	g	cod
Al	7035	2700	060S085G8190



# Sistemi di sospensione serie 85 Suspension systems series 85

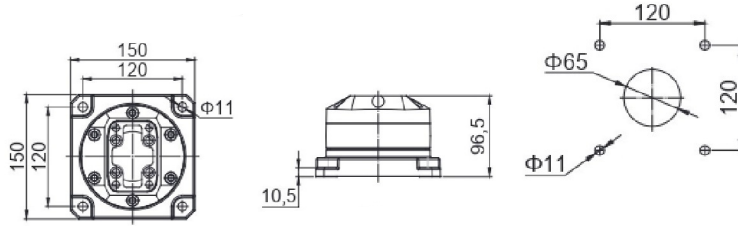
## Montanti / Bases



Montante a parete a snodo girevole/  
Wall-mount swivel base

mat col g cod

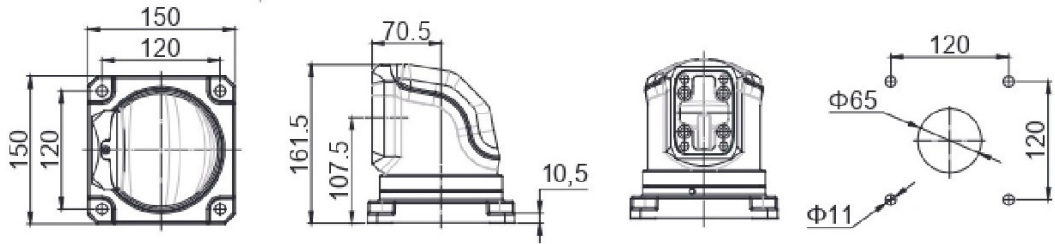
Al 7035 2600 060S085M8110



Montante angolare 90° girevole/  
Swivel 90° angular base

mat col g cod

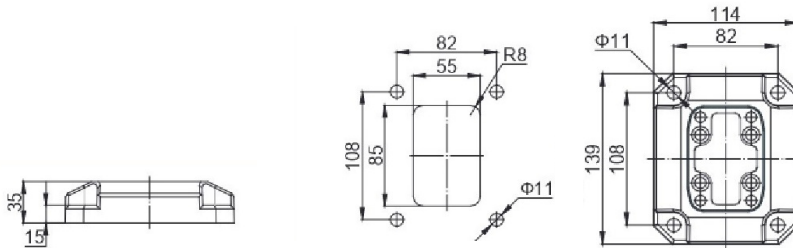
Al 7035 2600 060S085M8120



Montante fisso /  
Fixed-mount base

mat col g cod

Al 7035 500 060S085M8140



# Sistemi di sospensione serie 85 Suspension systems series 85

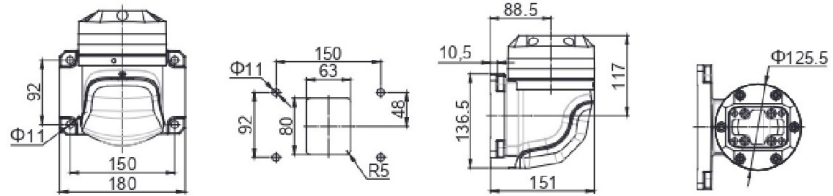
## Montanti / Bases



Montante a parete ang. 90° girevole /  
Wall-mount swivel 90° angular base

mat col g cod

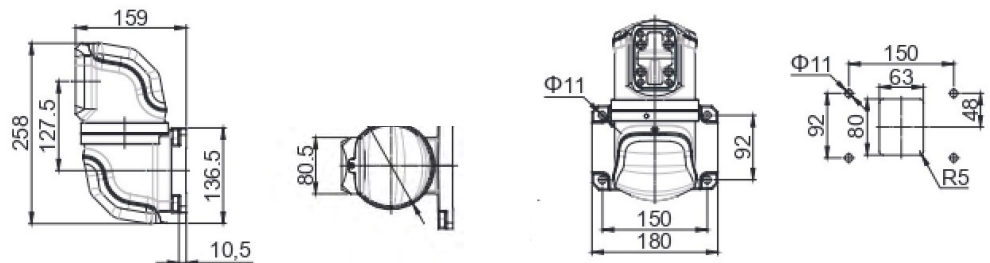
Al 7035 3200 060S085M8170



Montante girevole /  
Swivel base

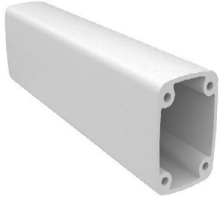
mat col g cod

Al 7035 3200 060S085M8180

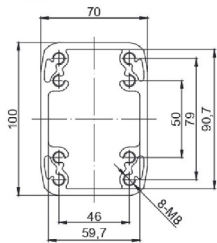


# Sistemi di sospensione serie 100 Suspension systems series 100

## Profilo di alluminio 70X100 / Aluminium profile 70x100



	mat	col	g	cod
Lunghezza / Length mm 350	Al	7035	-	<b>060S100B0350</b>
Lunghezza / Length mm 500	Al	7035	-	<b>060S100B0500</b>
Lunghezza / Length mm 750	Al	7035	-	<b>060S100B0750</b>
Lunghezza / Length mm 1000	Al	7035	-	<b>060S100B1000</b>
Lunghezza / Length mm 1500	Al	7035	-	<b>060S100B1500</b>
Lunghezza / Length mm 2000	Al	7035	-	<b>060S100B2000</b>

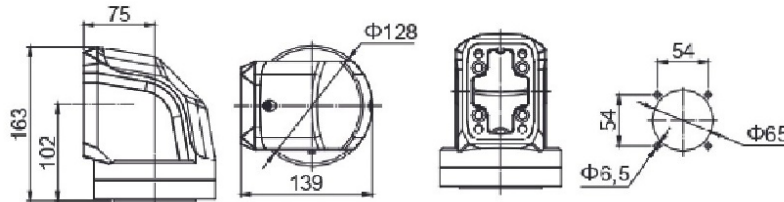


## Flange / Flanges



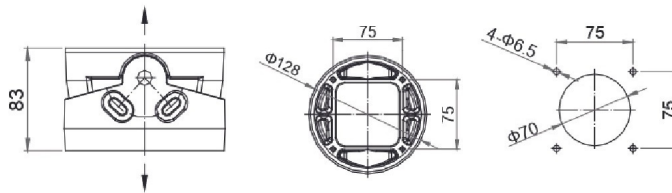
Flangia angolare 90° girevole /  
Swivel 90° angular flange

	mat	col	g	cod
	Al	7035	1800	<b>060S100F10050</b>



Adattatore per inclinazione regolabile  $\pm 15^\circ$  /  
Adapter for adjustable tilt  $\pm 15^\circ$

	mat	col	g	cod
	Al	7035	1800	<b>060S100F10060</b>

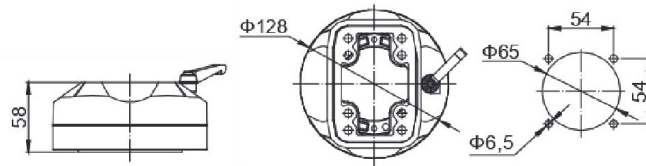


# Sistemi di sospensione serie 100 Suspension systems series 100

## Flange / Flanges



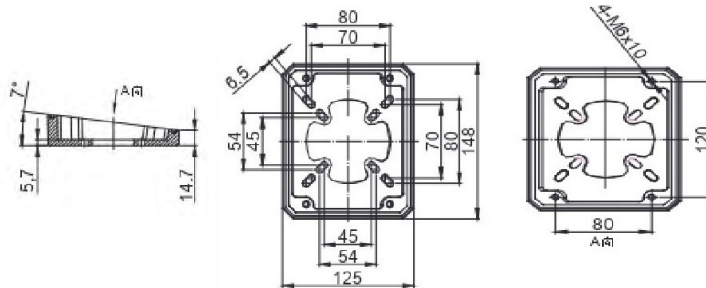
Flangia girevole  
Swivel flange



mat	col	g	cod
Al	7035	1200	060S100F10090



Adattatore per inclinazione 10°  
Adapter for tilt 10°



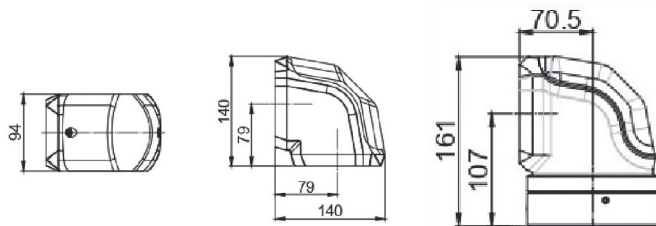
mat	col	g	cod
Al	7035	400	060S100F10165

# Sistemi di sospensione serie 100 Suspension systems series 100

## Giunti / Joints



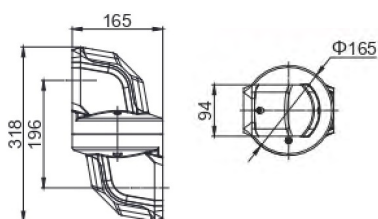
Angolo 90 ° /  
Angular 90°



mat	col	g	cod
Al	7035	1100	060S100G10100



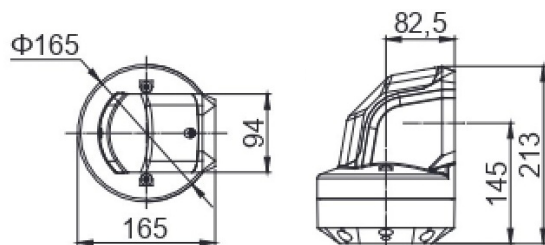
Giunto a snodo girevole /  
Swivel joint



mat	col	g	cod
Al	7035	4800	060S100G10130



Giunto angolare 90° girevole /  
90° angular swivel joint



mat	col	g	cod
Al	7035	4200	060S100G10190

# Sistemi di sospensione serie 100 Suspension systems series 100

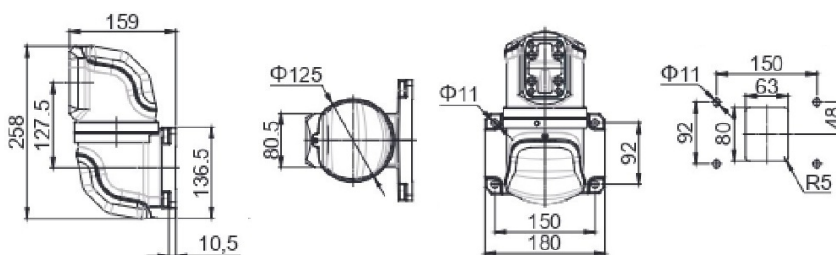
## Montanti / Bases



Montante a parete a snodo girevole /  
Wall-mount swivel base

**mat** **col** **g** **cod**

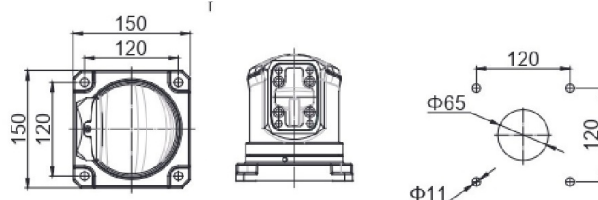
Al 7035 5700 **060S100M10110**



Montante angolare 90° girevole /  
Swivel 90° angular base

**mat** **col** **g** **cod**

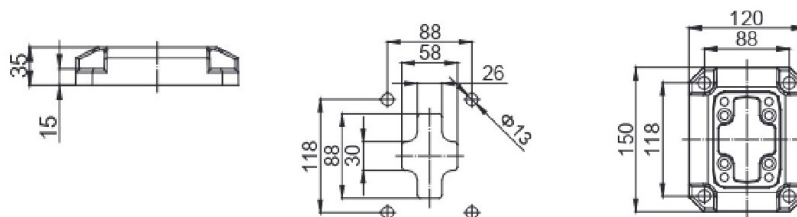
Al 7035 4800 **060S100M10120**



Montante fisso /  
Fixed-mount base

**mat** **col** **g** **cod**

Al 7035 600 **060S100M10140**



# Sistemi di sospensione serie 100 Suspension systems series 100

## Montanti / Bases



Montante angolare 90° girevole /  
Swivel 90° angular base

mat

col

g

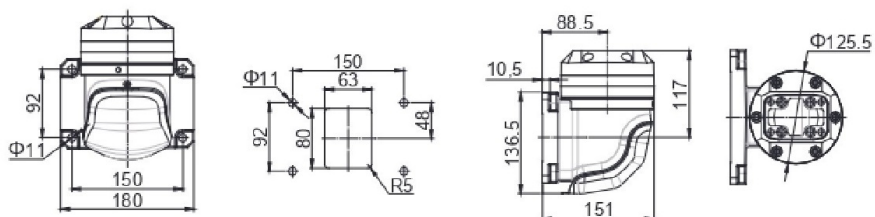
cod

Al

7035

5100

**060S100M10170**



mat

col

g

cod

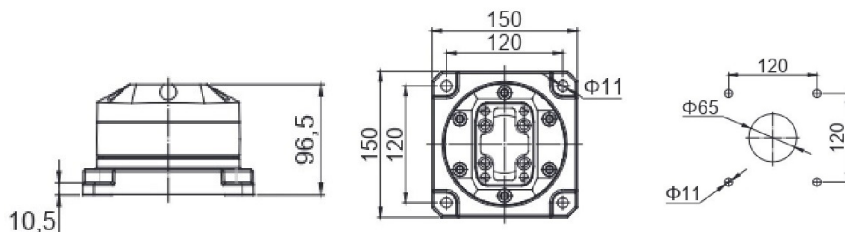
Al

7035

4300

**060S100M10180**

Montante girevole/  
Swivel base







# Quadri di comando pensili Suspended control panels

## Quadro Alluminio serie 120 - Aluminium cabinet series 120



L	H	l <sub>1</sub>	h <sub>1</sub>	cod
300	300	292	292	060S120C3030
300	400	292	392	060S120C3040
400	400	392	392	060S120C4040
400	500	392	492	060S120C4050
500	500	492	492	060S120C5050
500	600	492	592	060S120C5060
600	600	592	592	060S120C6060



Maniglia inferiore /  
Low handle

300	300	292	292	060S120C3030M1
300	400	292	392	060S120C3040M1
400	400	392	392	060S120C4040M1
400	500	392	492	060S120C4050M1
500	500	492	492	060S120C5050M1
500	600	492	592	060S120C5060M1
600	600	592	592	060S120C6060M1



Maniglia laterale /  
Side handle

300	300	292	292	060S120C3030M2
300	400	292	392	060S120C3040M2
400	400	392	392	060S120C4040M2
400	500	392	492	060S120C4050M2
500	500	492	492	060S120C5050M2
500	600	492	592	060S120C5060M2
600	600	592	592	060S120C6060M2

# Quadri di comando pensili Suspended control panels

## Quadro Alluminio serie 150 - Aluminium cabinet series 150



300	300	292	292	060S150C3030
300	400	292	392	060S150C3040
400	400	392	392	060S150C4040
400	500	392	492	060S150C4050
500	500	492	492	060S150C5050
500	600	492	592	060S150C5060
600	600	592	592	060S150C6060



Maniglia inferiore /  
Low handle

300	300	292	292	060S150C3030M1
300	400	292	392	060S150C3040M1
400	400	392	392	060S150C4040M1
400	500	392	492	060S150C4050M1
500	500	492	492	060S150C5050M1
500	600	492	592	060S150C5060M1
600	600	592	592	060S150C6060M1

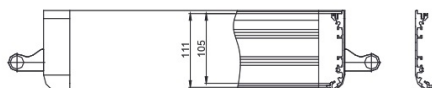


Maniglia laterale /  
Side handle

300	300	292	292	060S150C3030M2
300	400	292	392	060S150C3040M2
400	400	392	392	060S150C4040M2
400	500	392	492	060S150C4050M2
500	500	492	492	060S150C5050M2
500	600	492	592	060S150C5060M2
600	600	592	592	060S150C6060M2

# Quadri di comando pensili Suspended control panels

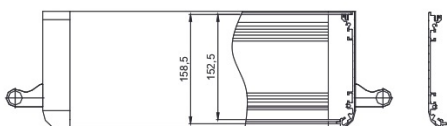
## Quadro Alluminio serie 105 - Aluminium cabinet series 105



L H l<sub>1</sub> h<sub>1</sub> cod

300	300	292	292	060S105C3030
300	400	292	392	060S105C3040
400	400	392	392	060S105C4040
400	500	392	492	060S105C4050
500	500	492	492	060S105C5050
500	600	492	592	060S105C5060
600	600	592	592	060S105C6060

## Quadro Alluminio serie 155 - Aluminium cabinet series 155

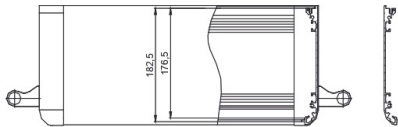


L H l<sub>1</sub> h<sub>1</sub> cod

300	300	292	292	060S155C3030
300	400	292	392	060S155C3040
400	400	392	392	060S155C4040
400	500	392	492	060S155C4050
500	500	492	492	060S155C5050
500	600	492	592	060S155C5060
600	600	592	592	060S155C6060

# Quadri di comando pensili Suspended control panels

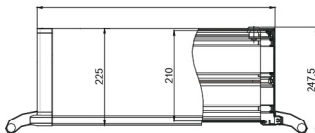
## Quadro Alluminio serie 180 - Aluminium cabinet series 180



L H I<sub>1</sub> h<sub>1</sub> cod

300	300	292	292	060S180C3030
300	400	292	392	060S180C3040
400	400	392	392	060S180C4040
400	500	392	492	060S180C4050
500	500	492	492	060S180C5050
500	600	492	592	060S180C5060
600	600	592	592	060S180C6060

## Quadro Alluminio serie 210 - Aluminium cabinet series 210



L H I<sub>1</sub> h<sub>1</sub> cod

300	300	292	292	060S210C3030
300	400	292	392	060S210C3040
400	400	392	392	060S210C4040
400	500	392	492	060S210C4050
500	500	492	492	060S210C5050
500	600	492	592	060S210C5060
600	600	592	592	060S210C6060